

## Additional Instructions for Mazda BT-50

### CUTTING OF GRILLE AND PLASTIC AIR DEFLECTOR



There are 2 main areas with regards to cutting the plastics on the 2021 BT-50.

These pictures assume that the front bumper and grille assembly have been removed from the car.

You will require a multi tool or similar cutting tool to cut the plastics as shown below. Take your time as overcutting could be costly. AFN 4x4 Australia assumes that the person undertaking these tasks has previous experience with operating these types of tools and understands the associated risks.

AFN 4x4 Australia cannot be held responsible for any damages or consequences from the incorrect cutting or processes involved in undertaking these tasks.

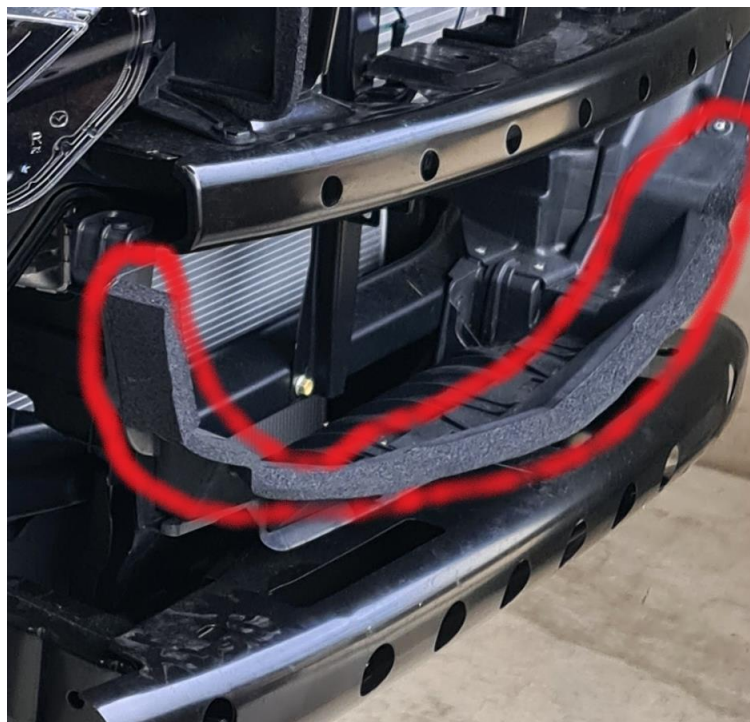
For the purpose of these pictures some additional trimming of the plastics had been done prior to taking these pictures.

Mazda BT-50 additional instructions

Once you have removed the bumper you will be required to remove the original steel crash support.



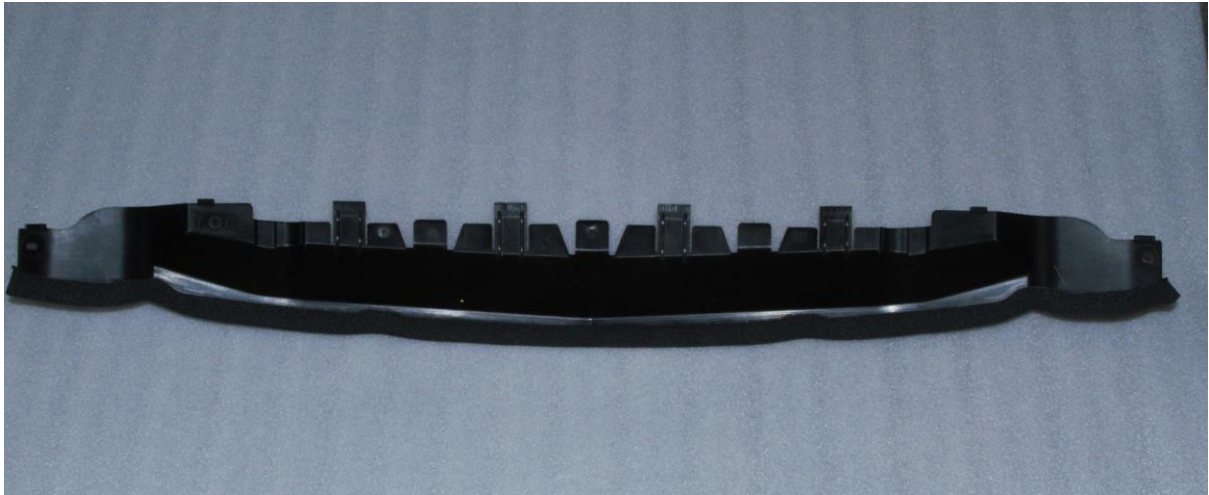
Remove the front Plastic deflector and discard. This part is held on with 2 rivets, one on each end and several plastic clip-in tabs.





## Mazda BT-50 additional instructions

This part can be discarded.



The next step is to remove the balance of the cooling deflectors. Please note that it is important to do this, and these plastics should not just be removed as part of the fitting process. You may choose to cut these without removing the rivets, but it may be difficult. For the purpose of this document, we have drilled out the 3 rivets each end so as to separate the pieces. This made it easier to trim the parts as required.



## Mazda BT-50 additional instructions

### Cutting the 2 side pieces

Using a marker pen or similar mark the side plastics as shown. Please note that there is a slight variation between left and right, but the principle is the same. Cut the plastic using a multi-tool or similar. The foam edging can be cut with a pair of scissors.



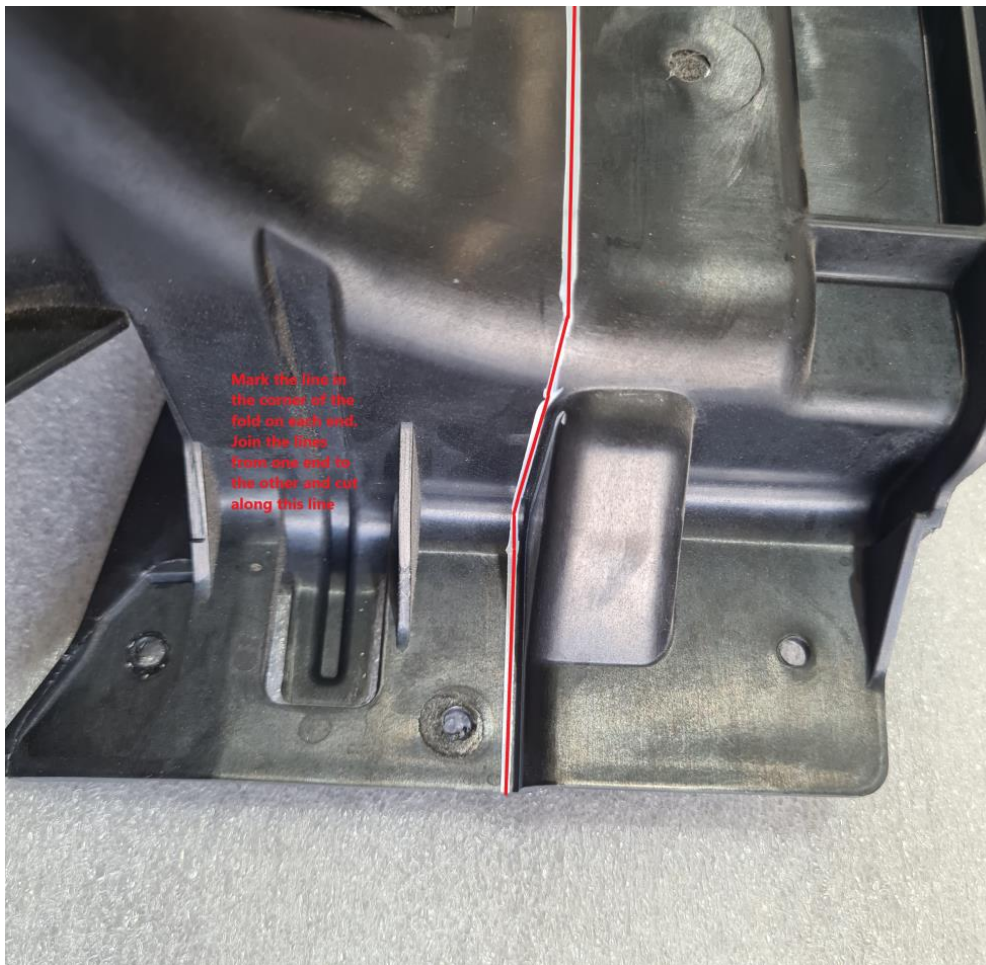
### End Result





Mazda BT-50 additional instructions

Trimming the center portion.



Mazda BT-50 additional instructions

End Result



Once you have trimmed these parts replace them back on the vehicle and rivet the plastics back together again. Please note that rivets are not supplied with the fitting kit.

### Cutting the grille

The processes below assume that the grille has been removed from the car.

The grille consists of a number of different pieces. Please note that the entire grille assembly is large and should not be handled alone. The grille will include the front bonnet adge piece, two decorative chrome bottom headlight eyelids and the inner support which forms part of the center grille section.

Separate the chrome portions from the rest of the grille. These will be trimmed after the inner support is trimmed. The 2 pieces are joined together with a several tabs and screws. Care should be taken so as to not scratch the parts during handling. Please also note that the pictures shown below may show the original grille on both a Chrome Finish or as a black finish. The end result is still the same.

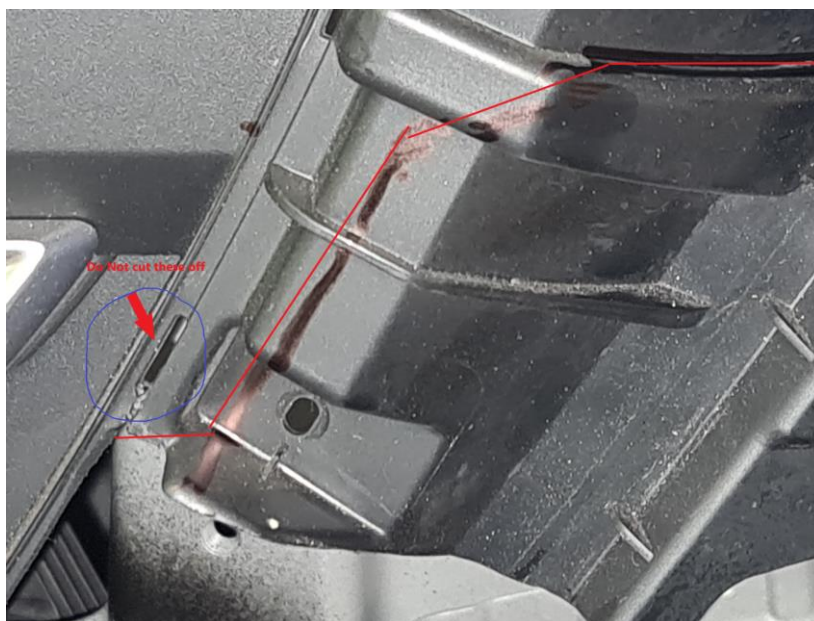
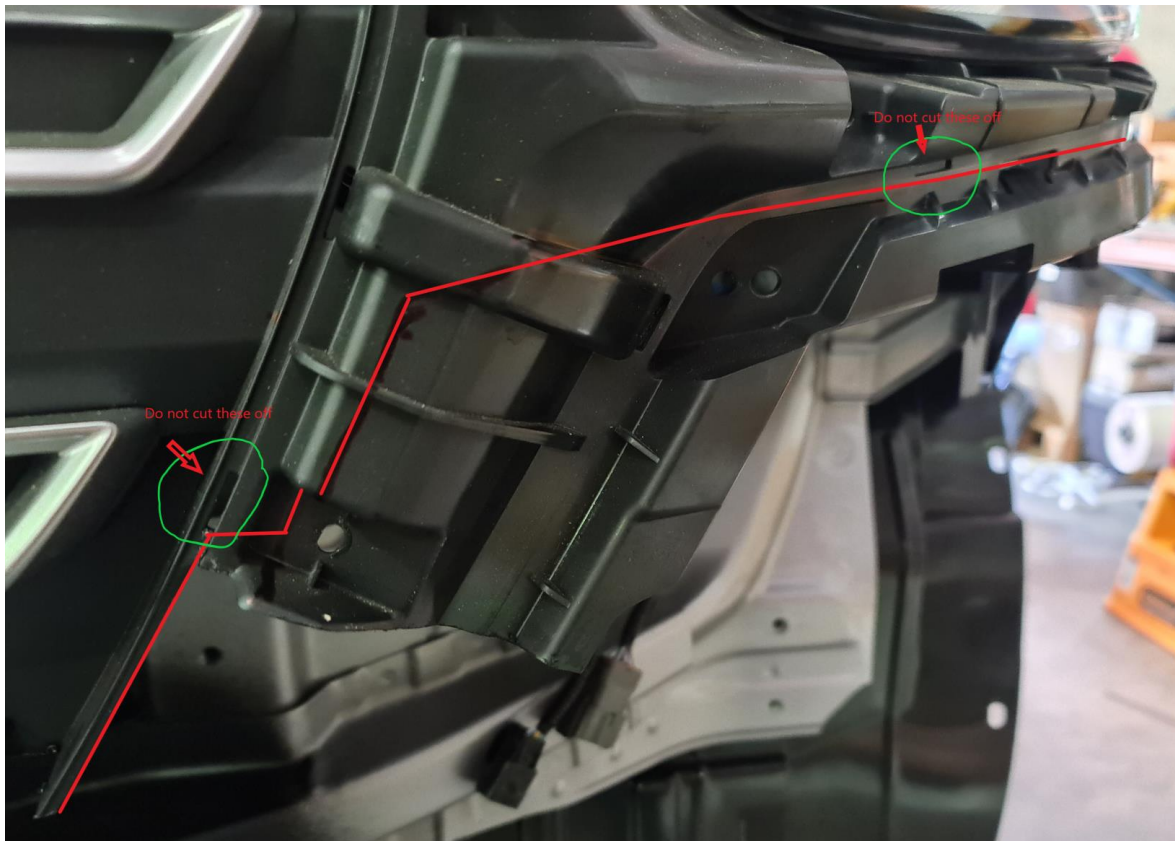
This picture shows the chrome portion still attached to the support structure. Remove the chrome portions.





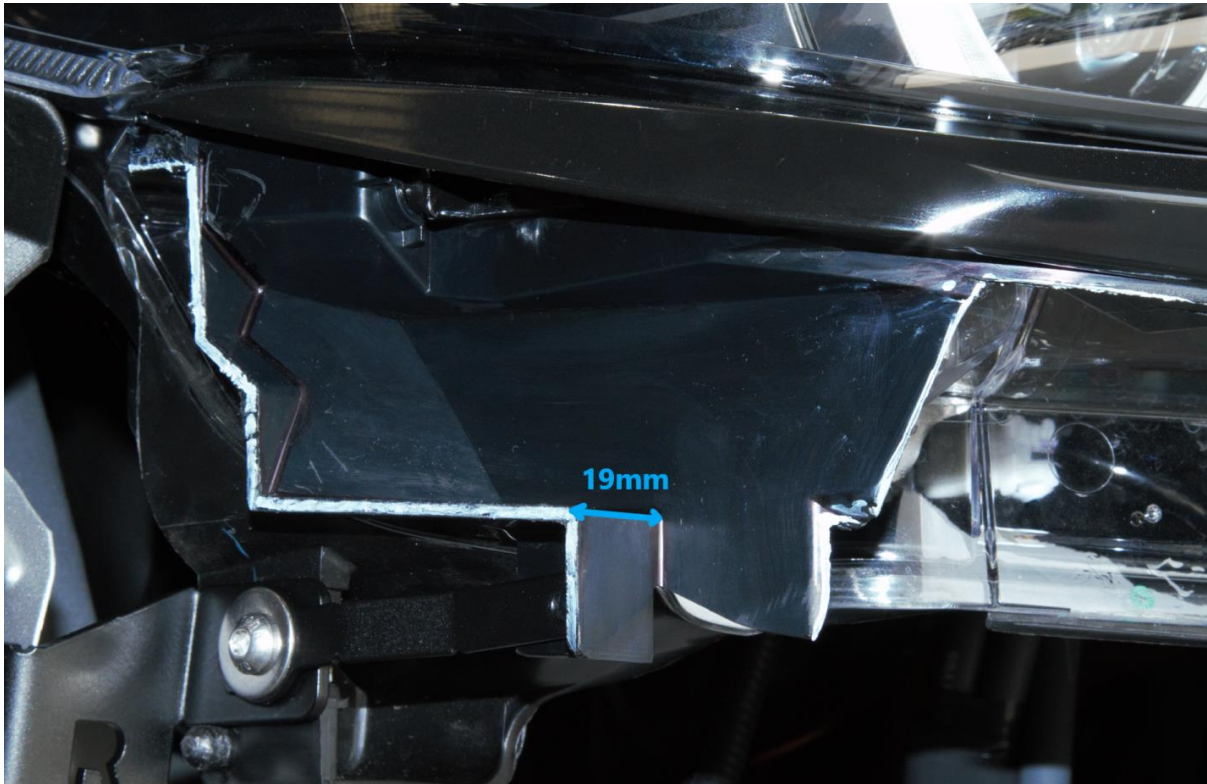
Mazda BT-50 additional instructions

Reposition the grille assembly back on the vehicle so that the cut lines can be marked. Care should be taken so that the holes where the chrome eyelid parts fits into are not removed during the cutting process. If these are removed it is more than likely it will prevent the eyelids from fitting correctly.





Mazda BT-50 additional instructions



The white edge shows the cut line once fitted. Please note that in this picture the eyelid is fitted to the grille.



Trimming of Grille.

## Warning

Please note that if your car is fitted with a chrome grille special care must be taken when cutting the parts. The chrome is attached to the plastic by means of a copper coating process and the chrome is then applied to the copper. This copper may appear to be a foil but is bonded to the plastic. When cutting, prevent any tool that is going to cause high temperatures or that has a ripping action. Please pay special attention when cutting any chrome parts. Please test your cutting tool on a portion of the grille that will not be part of the finished vehicle.

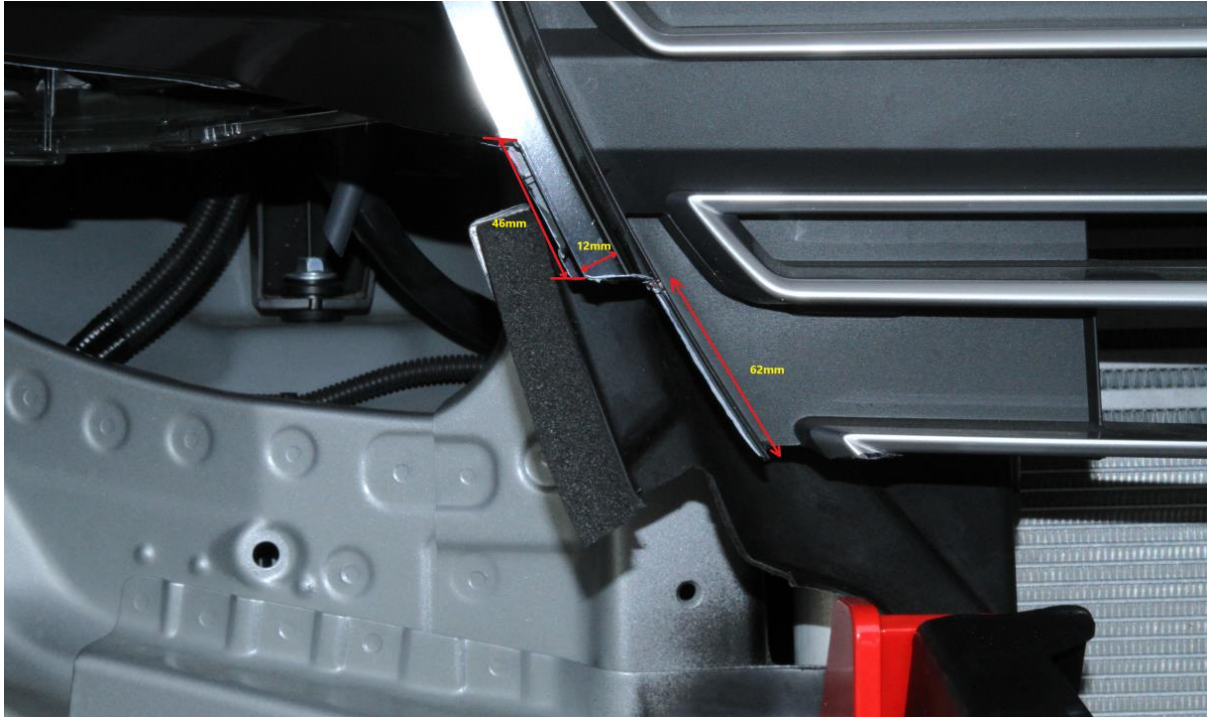
Cut the center grille as shown in the image below. Use the bottom of the horizontal fin as a guide. Deburr all edges once trimmed.





## Mazda BT-50 additional instructions

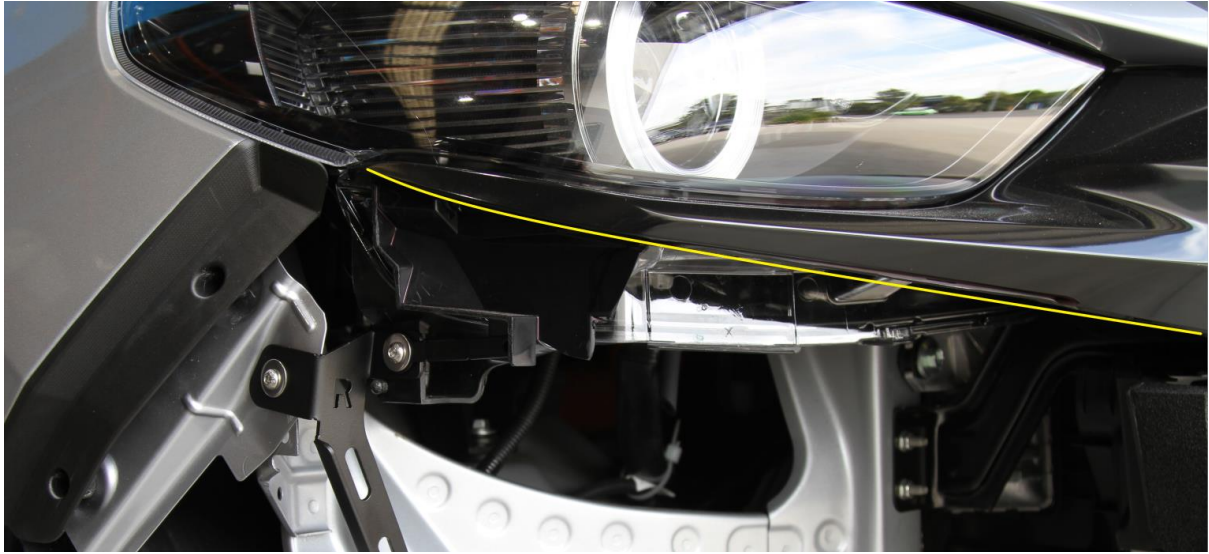
The following picture shows where the outer eyelid is trimmed in relation to the inner support grille.



The eyelids need to be cut along the bottom edge. This is a continuation of the existing edge and should be marked using masking tape or similar. Extend the line from the corner on the outer edge of the headlight to the point where it joins the edge of the grille as highlighted below. Deburr all edges once cut.



Mazda BT-50 additional instructions





### Fitting the Headlight support brackets

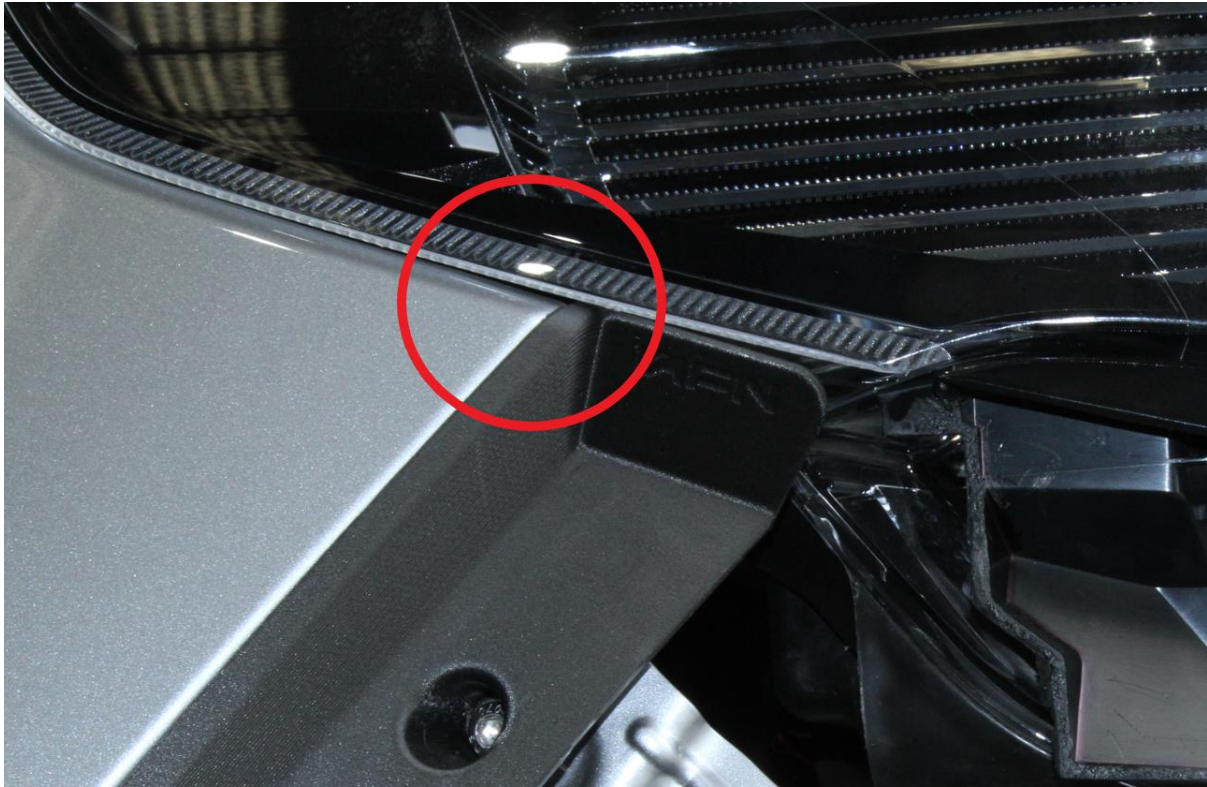
As part of the kit there are 2 headlight support brackets. These brackets are marked left and right. Special care must be taken when fitting these brackets. The brackets prevent the headlights from resting on the bodywork of the car. Please follow the sequence of tightening.

1. Secure the bottom two bolts while raising the bracket as high as possible.
2. Secure the side bolt which joins the side fender to the bracket.
3. This step is the most important. While holding the eyelid support arm in place as well as lifting the headlight tighten the final bolt. There should be a small gap under the headlight.

AFN 4x4 Australia will not be held responsible for any damages caused to the body for not following this procedure.



Small gap under headlight.



Securing the eyelid to the side support arm.

Due to the trimming of some of the original support structure the end of the eyelid will need to be secured. While pushing the eyelid into the original position mark a hole using the template as a guide. Drill a hole through the plastic and secure with the provided bolt and nut.

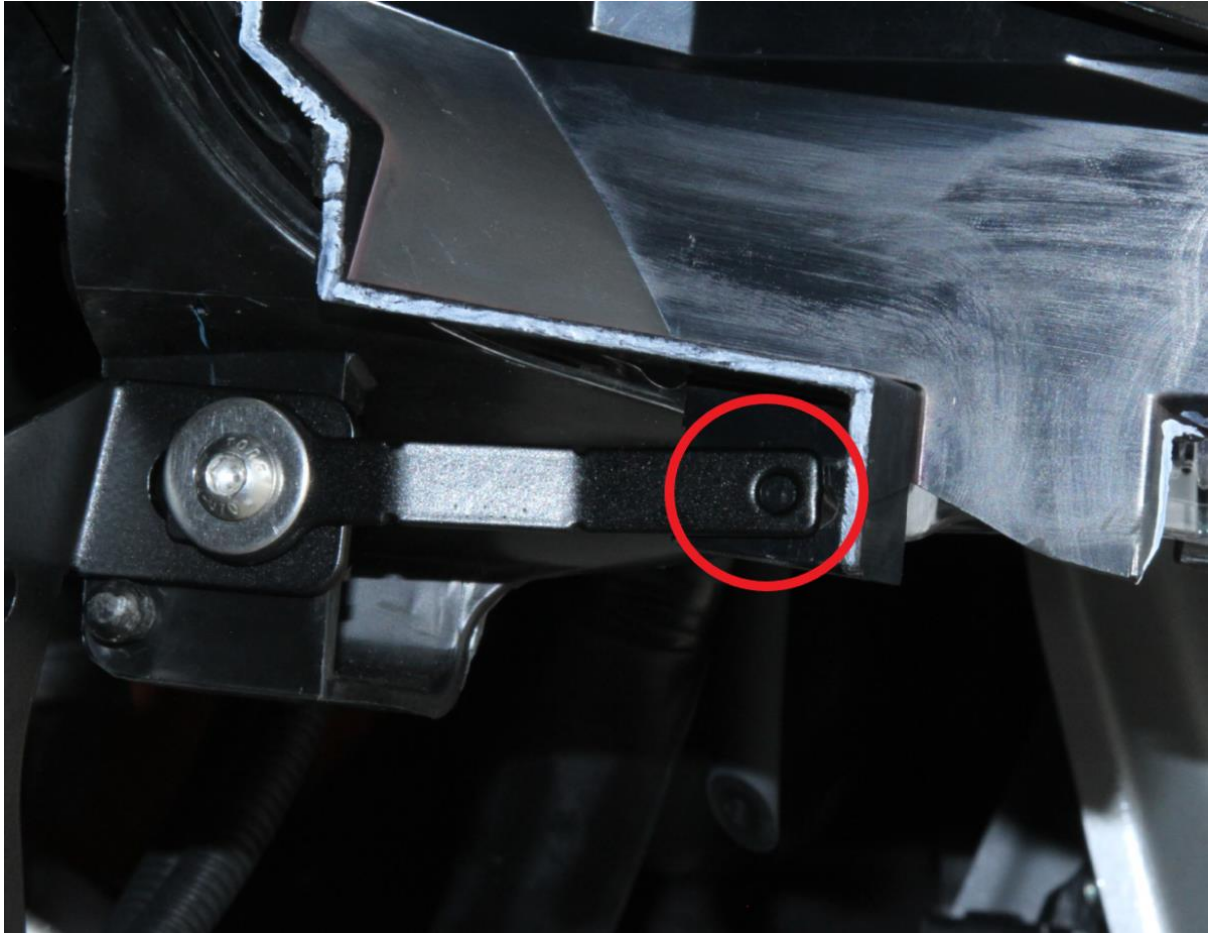
Please note that if the support arm needs to be repositioned please ensure the headlight remains in the correct position and gap.

Once complete the eyelid should be held in the original position ready for the next part of installation.

Please note that these procedures should be carried out prior to the fitting of the Bullbar.



Mazda BT-50 additional instructions



### Rubber Trim.

As part of the supply, we have included an additional self-adhesive rubber trim to be fitted to the inner edge of the front lip of the Bullbar. There is also a “Pinch Mold” style rubber which can also be used as an alternate rubber.

The additional rubber supplied with the Bullbar is to improve the look under the headlight area and should be used as part of the build.

